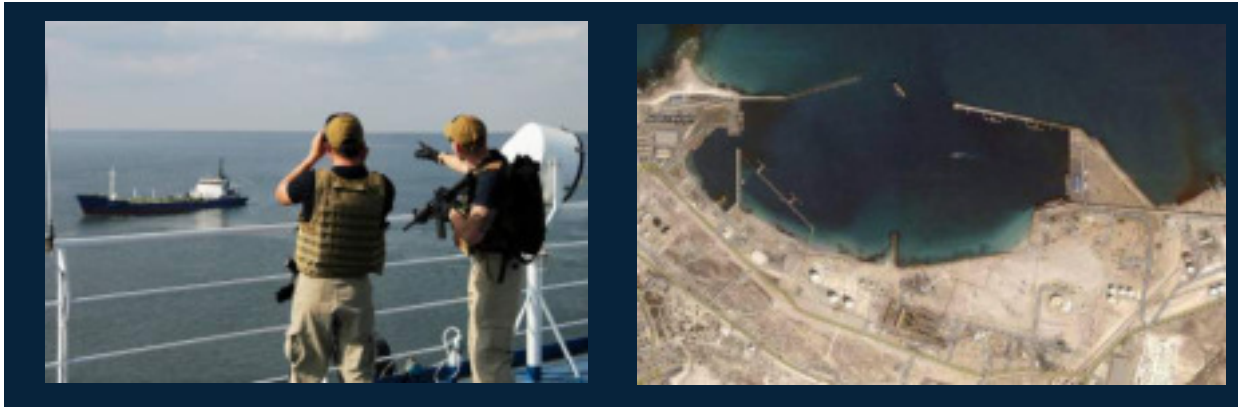




# Maritime Security Review

15 February 2016

Issue No. 6



MS | RISK

8 - 14 FEB  
2016

## Table of Contents

---

Table of Contents .....	2
Summary .....	3
<b>Gulf of Aden/Arabian Sea .....</b>	<b>4</b>
<i>Somalia</i> .....	4
<i>At Sea</i> .....	4
<i>Incident Map</i> .....	5
<i>Weather Forecast for Gulf of Aden/Arabian Sea</i> .....	6
.....	7
<i>Spotlight Report: Yemen</i> .....	8
<b>Gulf of Guinea .....</b>	<b>9</b>
<i>At Sea</i> .....	9
<i>Incident Map</i> .....	10
<i>Weather Forecast for Gulf of Guinea</i> .....	10
<b>Southeast Asia .....</b>	<b>11</b>
<i>At Sea</i> .....	11
<i>Incident Map</i> .....	12
<i>Weather Forecast for Southeast Asia</i> .....	12
<b>Worldwide .....</b>	<b>13</b>
<i>North America</i> .....	13
<i>Central America/Caribbean/South America</i> .....	13
<i>Atlantic Ocean Area</i> .....	14
<i>Northern Europe/Baltic</i> .....	14
<i>Mediterranean/Black Sea</i> .....	14
<i>Spotlight Report: Libya</i> .....	14
<i>Arabian Gulf</i> .....	15
<i>East Asia/Indian Subcontinent</i> .....	15
<i>Northeast Asia</i> .....	16
<i>Pacific Ocean/Southern Ocean</i> .....	16
<b>About MS Risk .....</b>	<b>17</b>

## Summary

---

### *List of Incidents at Sea for this Reporting Period*

#### Main Regions

**Gulf of Aden/Arabian Sea:** No incidents reported during this period

**Gulf of Guinea:** Three late reported incidents during this period

**Southeast Asia:** No incidents reported during this period.

#### Worldwide

**North America:** No current incidents to report

**Central America/Caribbean/South America:** Two late reported incidents during this period

**Atlantic Ocean Area:** No current incidents to report

**Northern Europe/Baltic:** One incident reported during this period

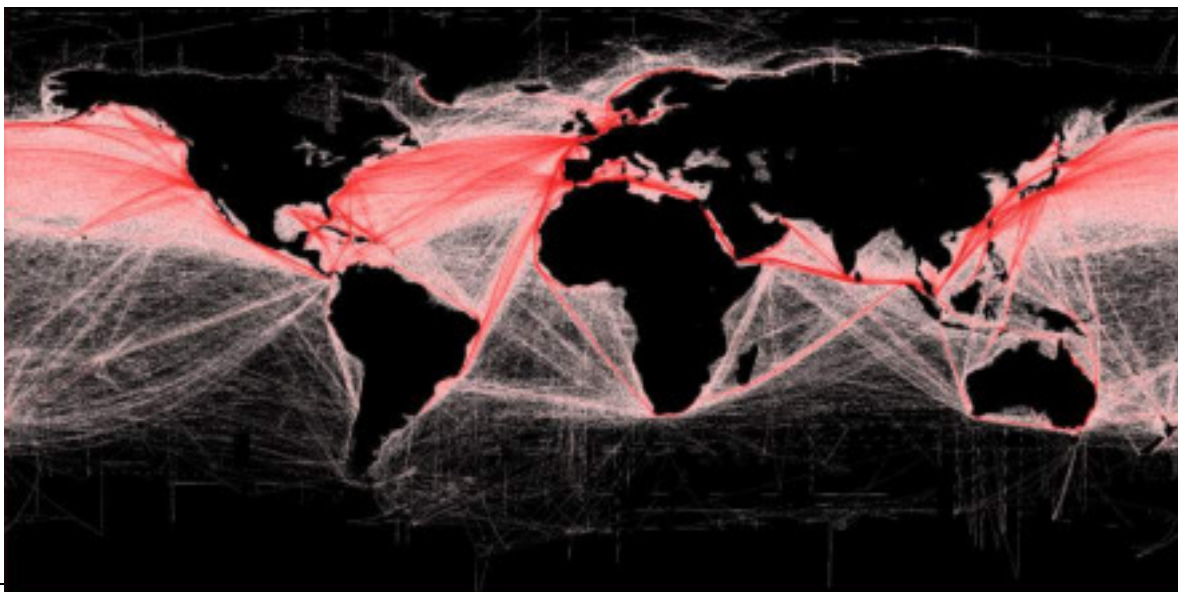
**Mediterranean/Black Sea:** NATO deploys Aegean people-smuggling patrols

**Arabian Gulf:** No current incidents to report

**East Asia/Indian Subcontinent:** One late reported incident during this period

**Northeast Asia:** One late reported incident during this period

**Pacific Ocean/Southern Ocean:** No current incidents to report



## Gulf of Aden/Arabian Sea

---

### Somalia

***Pirate and maritime crime activity in waters off East Africa remains at a low level, with no reports of suspicious activity during this reporting period.***

Masters are advised to remain vigilant at all times inside the HRA and are advised to adhere to strict guidance and protective measures as set down in BMP4. Sailing yachts should avoid transiting the HRA. Past activity has demonstrated that pirates will attack both large and small yachts transiting this region. While successful attacks and hijackings of merchant vessels have significantly decreased over the past two years, the possibility of attacks and the successful hijacking of sailing vessels continue to remain high. This is due to the reduction of revenue sources from pirated merchant vessels and the fact that sailing yachts are vulnerable and easier targets. PAG's continue to conduct "soft approaches" on merchant ships transiting the area. Skiffs have approached vessels in order to probe the reaction of the crewmembers and any possible Privately Contracted Armed Security Personnel (PCASP) onboard. If the pirate approach does not elicit a response, the pirates will likely proceed with an attack, in which additional skiffs may participate.

### At Sea

#### Hijacks

- None reported during this period.

#### Unsuccessful Attacks/Robberies

- None reported during this period.

#### Vessels Fired Upon/Attempted Boardings

- None reported during this period.

#### Vessels Boarded

- None reported during this period.

#### Kidnapping

- None reported during this period.

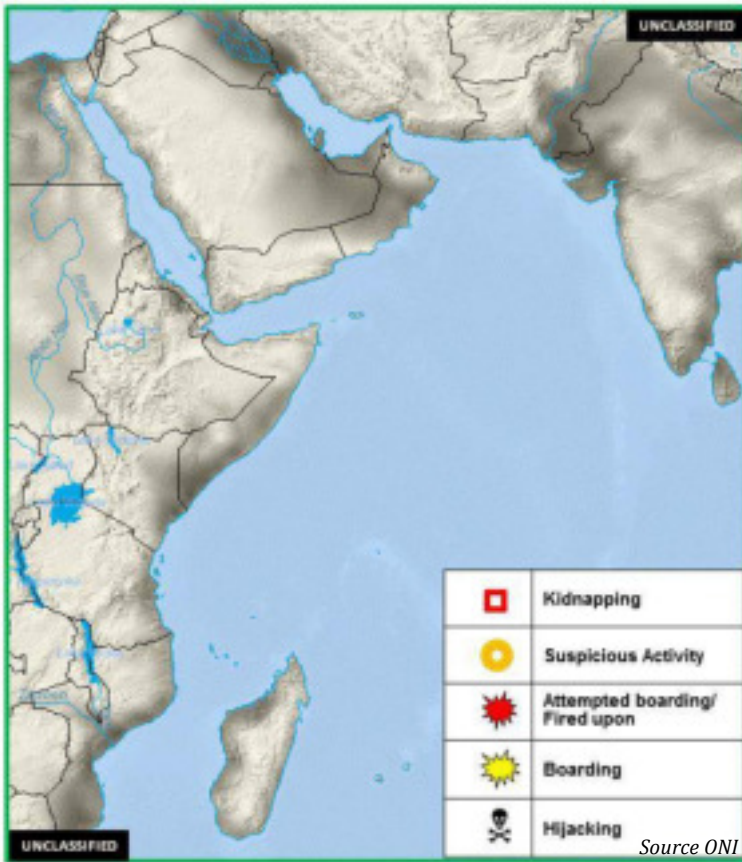
#### Suspicious Activity

- None reported during this period.

#### Other Activity

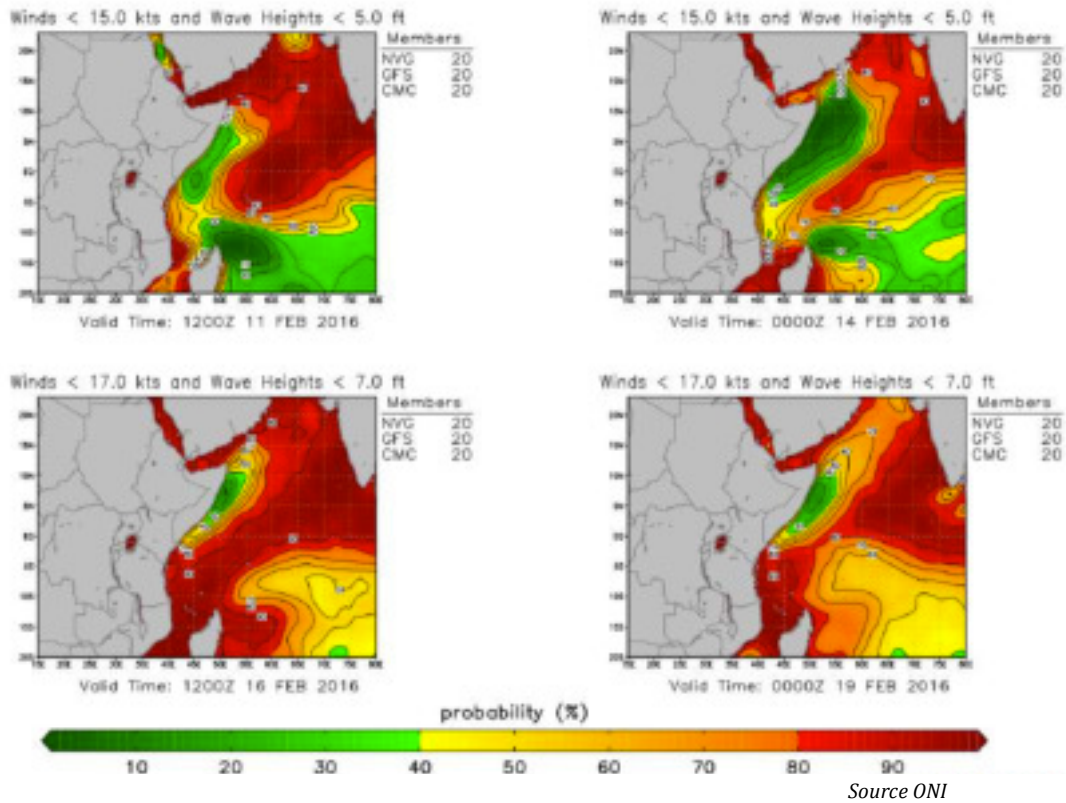
- None reported during this period.

Incident Map



## Weather Forecast for Gulf of Aden/Arabian Sea

- **Northern Arabian Sea:** Northeast winds of 13 – 18 knots and seas of 6 – 9 feet.
  - **Extended Forecast:** North-northeast winds of 15 – 20 knots and seas of 6 – 9 feet.
- **Gulf of Oman:** West-northwest winds of 15 – 20 knots and seas of 3 – 5 feet in the western section of the Gulf; with west-northwest winds of 15 – 20 knots and seas of 3 – 5 feet in the eastern section of the Gulf.
  - **Extended Forecast:** East-northeast winds of 8 – 13 knots and seas of 3 – 5 feet in the western section of the Gulf; in the eastern section of the Gulf, winds will be east-northeasterly at 15 – 20 knots with seas of 4 – 6 feet.
- **Gulf of Aden:** East-northeast winds of 13 – 18 knots and seas of 3 – 5 feet in the western section of the Gulf; in the eastern section of the Gulf winds will be east-northeasterly at 13 – 18 knots with seas of 3 – 5 feet.
  - **Extended Forecast:** East-northeast winds of 15 – 20 knots, gusting to 25 knots, and seas of 3 – 5 feet in the western section of the Gulf; with east-northeast winds of 15 – 20 knots, gusting to 25 knots, and seas of 3 – 5 feet in the eastern section of the Gulf.
- **Somali Coast:** Northeast winds of 20 – 25 knots and seas of 6 – 9 feet in the northern section of the coastline; with northeast winds of 18 – 23 knots and seas of 5 – 7 feet in the southern section of the coastline.
  - **Extended Forecast:** Northeast winds of 20 – 25 knots, gusting to 30 knots, and seas of 6 – 9 feet in the northern section of the coastline; in the southern section of the coastline, winds will be northeasterly at 18 – 23 knots with seas of 5 – 7 feet.
- **Central African Coast/Indian Ocean:** North-northeast winds of 10 – 15 knots and seas of 3 – 5 feet.
  - **Extended Forecast:** North-northeast winds of 10 – 15 knots and seas of 3 – 5 feet.
- **Mozambique Channel:** Northwest winds of 18 – 23 knots and seas of 2 – 4 feet in the northern Channel; with southeast winds of 20 – 25 knots, gusting to 30 knots, and seas of 6 – 9 feet in the southern Channel.
  - **Extended Forecast:** Northwest winds of 23 – 28 knots, gusting to 35 knots, with seas of 4 – 7 feet in the northern Channel; in the southern Channel, winds will be southeasterly at 20 – 25 knots, gusting to 30 knots, with seas of 6 – 9 feet.
- **Surface Currents:** The northern Arabian Sea and Gulf of Aden currents are variable with most areas having an average speed of 1 knot. The Mozambique Channel currents are variable having an average speed of 2 knots. Currents speeds along the Somali Basin are northeasterly averaging between 1 – 2 knots.
- **Synoptic Discussion:** The Northeast Monsoon is underway in the Somali Basin. A weak cold front associated with low pressure moving through Iraq/Iran will impact the Gulf of Oman later in the forecast period.



## Spotlight Report: Yemen

As of 15 February, the following ports in Yemen are open:

- Aden
- Hodeidah
- Mokha
- Mukalla
- Salif

The remaining ports are closed due to the ongoing conflict between the pro-government coalition and Houthi rebels. **NOTE:** In a message dated 5 February, the Saudi Embassy in London has advised international organisations and aid agencies to move offices and staff from regions where Houthi Militia and supporters are active. The UN has reiterated that aid efforts will continue to facilitate access per the Saudi de-confliction mechanism. MS Risk advises that shipmasters and owners stay up-to-date on the situation, and be aware of changes to maritime guidelines for entry into Yemeni territorial waters.

## Activity Report

Fighting has remained intense in Yemen as units supportive of the Yemeni government, in tandem with the Saudi-led coalition, continue to combat Houthi rebel forces. Amid the unrest, terrorist group Al Qaeda in the Arabian Peninsula (AQAP) has used the opportunity to gain territory. In recent months, both the Houthi rebels and AQAP militants have sought control of Yemeni ports, and in some cases, have taken temporary control. However, ground surges by government forces, reinforced by coalition air defence, has allowed pro-government forces to recapture them.

## Procedure

Vessels calling at all ports in Yemen require clearance from the Saudi-led coalition and the Ministry of Transport prior to entering Bab Al-Mandab. The measure is in place to prevent weapons intended for the Houthi rebel forces from entering the country. Once the vessel arrives outside Bab Al-Mandab, the shipmaster should call the naval forces of the Saudi Arabian coalition to register a notice of arrival and indicate location. Ships entering Yemeni waters will be advised where to anchor for inspection. All contact will be with the ship's master or Chief Officer about the cargo and documents. Once cleared, the ship is allowed to enter port. This procedure will not take more than 48 hours.



## Gulf of Guinea

---

***Pirate and maritime crime activity in waters off West Africa remains at a low level. There were two boardings, one attempted boarding and one stowaway event during this reporting period.***

All vessels transiting this region however are reminded to remain vigilant at all times. Over the past several weeks, there have been a number of piracy incidents reported in waters in the Gulf of Guinea, particularly off the coast of Nigeria. While over the past eighteen months, the number of hijackings has declined in this region, in recent weeks, piracy incidents near Bonny Island and Port Onne mark an increase in piracy activity off the Niger Delta. The attempts come after the successful hijacking and abduction of five crewmembers on 31 January in the Niger Delta. Since an arrest warrant for former Niger Delta militant leader Government Ekpemupolo, known as Tompolo, was issued by the Nigerian government in mid-January 2016, crude export pipelines have been targeted as well as pipelines feeding the refineries, which has forced the plants to close down. Furthermore, several vessels have also come under attack from pirates. Two Biafran separatist groups in the Niger Delta have denied reports that they are behind the kidnappings and attacks on vessels. While this may be true, it is possible that their brand is being used by other militants in a bid to conceal the true identities of who is behind the attacks.

### At Sea

#### Hijacks

- None reported during this period.

#### Unsuccessful Attacks/Robberies

- None reported during this period.

#### Vessels Fired Upon/Attempted Boardings

- **5 February 2016 (Nigeria - Late Report)** – Seven persons wearing dark boiler suits with red caps in a speed boat chased and attempted to board an underway LNG tanker near position 04:09 N – 006:38E, 16 nautical miles southwest of Bonny Island. The alarm was raised, fire hoses were activated, Master increased speed to maximum and carried out evasive maneuvers. When the speedboat closed to within ten metres, automatic weapons and a ladder were sighted by the crewmen. Due to the hardening measures taken by the vessel's Master, the robbers aborted the approach and moved away.

#### Vessels Boarded

- **9 February 2016 (Democratic Republic of Congo)** – Four robbers armed with knives boarded an anchored vessel near position 05:51 S – 013:03 E, Boma Anchorage. The alarm was sounded at which point they fled using a small boat. Upon investigation, a fire hose and several fire hose nozzles were stolen, no crew were harmed.
- **5 February 2016 (Nigeria - Late Report)** – Six robbers boarded the Singapore-flagged container carrier SAFMARINE KURAMO near position 04:02 N – 006:54 E, 60 nautical miles southwest of Bonny River. A Nigerian Navy ship responded to the boarding and the robbers left the vessel.

#### Kidnapping

- None reported during this period.

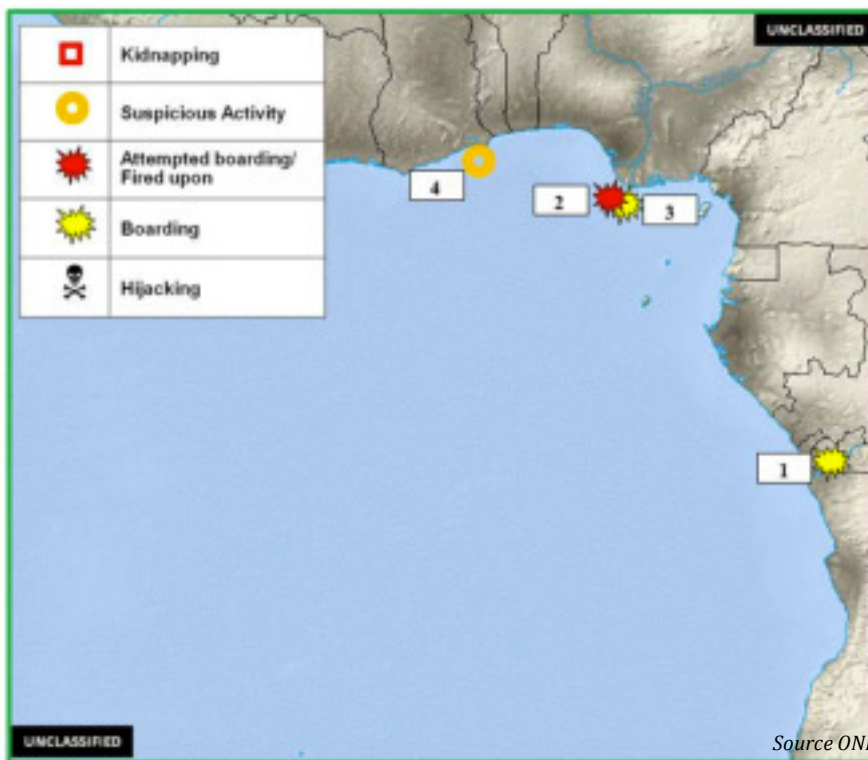
**Suspicious Activity**

- None reported during this period.

**Other Activity**

- **5 February 2016 (Ghana - Late Report)** – Police in the port of Tema arrested 8 Ghanaian citizens who had stowed away in two shipping containers in an effort to get to Europe

**Incident Map**



**Weather Forecast for Gulf of Guinea**

- **Northern Arabian Sea:** South-southwest winds of 8 – 13 knots with seas of 3 – 5 feet.
  - **Extended Forecast:** South-southwest winds of 8 – 13 knots with seas of 3 – 5 feet.
- **Synoptic Discussion:** Expect partly to mostly cloudy conditions for the Gulf of Guinea with associated rain showers.

## Southeast Asia

---

***Pirate and maritime crime activity in waters off Southeastern Asia remains at a low level however the threat of violent attacks, crime and hijackings remains high across this region. There were no incidents reported in the region during this period.***

Pirate Action Groups (PAG's) operating in this region are likely to target vessels to siphon fuel or oil onto another ship. Masters are therefore reminded to remain vigilant at all times in all regions, including at ports and anchorages. Attacks and robberies can occur at anytime. Incidents involving the siphoning of oil/fuel have been on the rise in recent months. Masters are reminded to remain vigilant at all times and to report any incidents, suspicious activity, attacks or hijackings to the local authorities.

### At Sea

#### **Hijacks**

- None reported during this period.

#### **Unsuccessful Attacks/Robberies**

- None reported during this period.

#### **Vessels Fired Upon/Attempted Boardings**

- None reported during this period.

#### **Vessels Boarded**

- None reported during this period.

#### **Kidnapping**

- None reported during this period.

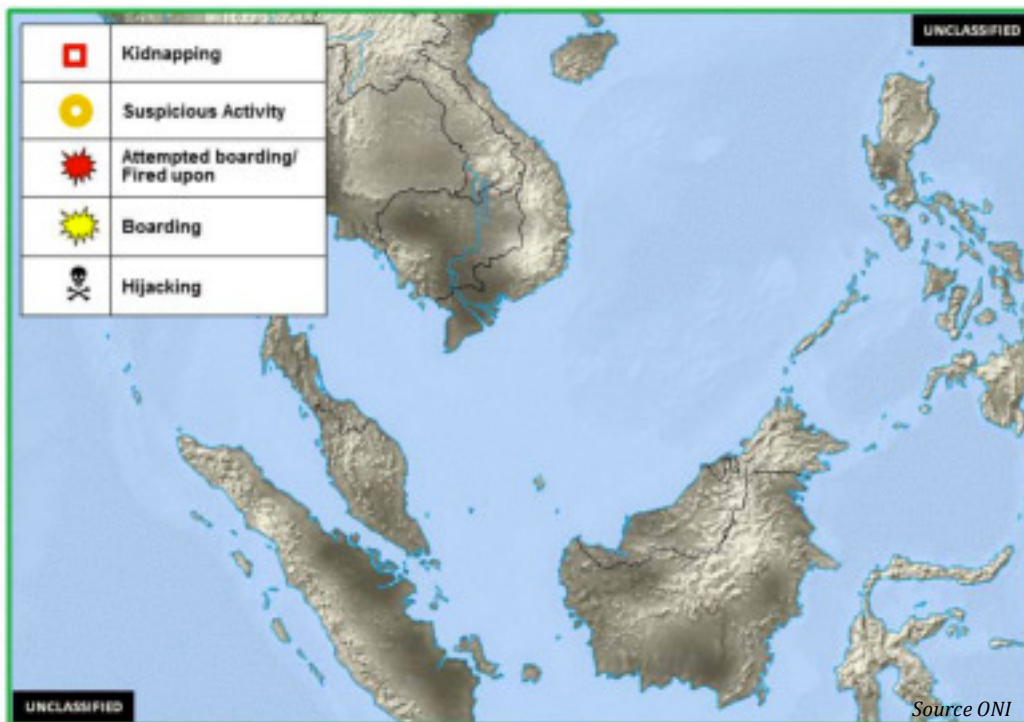
#### **Suspicious Activity**

- None reported during this period.

#### **Other Activity**

- None reported during this period.

## Incident Map



## Weather Forecast for Southeast Asia

- **South China Sea:** Northeast winds of 10 – 15 knots and seas of 3 – 5 feet.
  - **Extended Forecast:** Northeast winds of 20 – 25 knots, gusting to 30 knots, and seas of 9 – 11 feet.
- **Malacca Strait:** Easterly winds of 15 – 20 knots, gusting to 28 knots, and seas of 2 – 4 feet in the northern Strait; in the southern Strait, winds will be variable at 5 – 10 knots with seas of 1 – 3 feet.
  - **Extended Forecast:** Easterly winds of 12 – 17 knots, gusting to 22 knots, and seas of 3 – 5 feet in the northern Strait; with variable winds of 5 – 10 knots and seas of 1 – 3 feet in the southern Strait.
- **Andaman Sea:** Northerly winds of 7 – 12 knots and seas of 1 – 3 feet.
  - **Extended Forecast:** Northerly winds of 7 – 12 knots and seas of 3 – 5 feet.
- **Surface Currents:** Currents in the South China Sea and Malacca Strait average speeds of 1 knot, while currents in the Andaman Sea average 1 to 2 knots.
- **Andaman Sea:** A weak cold front will move along the southern China coast line through the first portion of the week with high pressure building in afterwards. Weak tropical disturbances progressively move across the Inter-Tropical Convergence Zone (ITCZ) over the southern South China Sea. The Andaman Sea and Malacca Strait will see isolated to widely scattered rain showers and thunderstorms throughout the forecast period.

## Worldwide

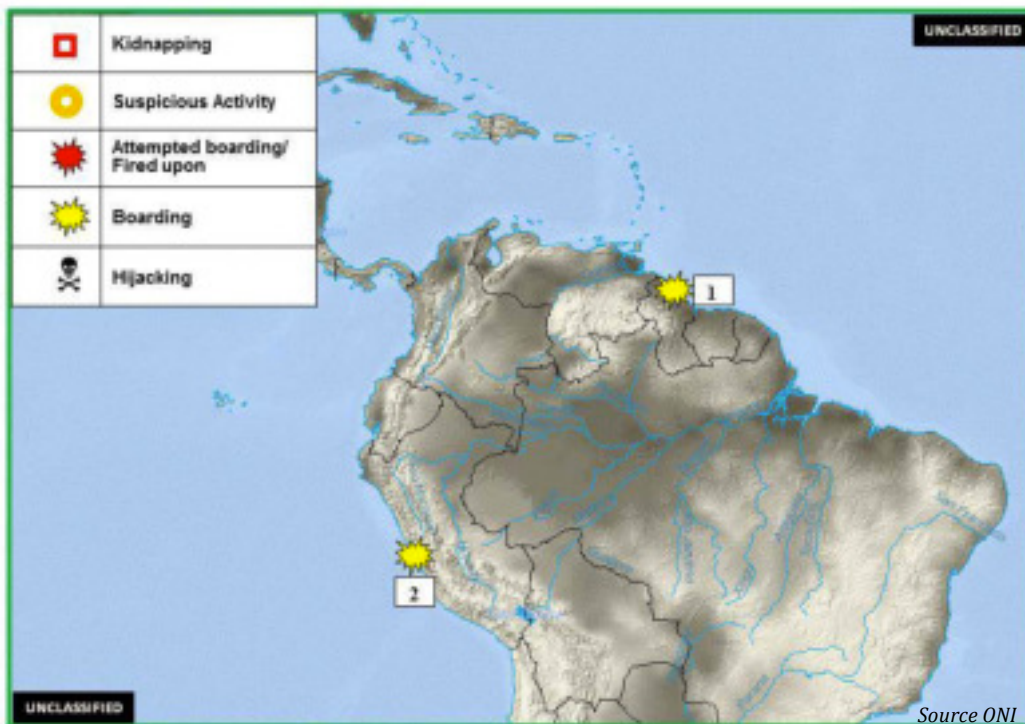
---

### North America

No current incidents to report

### Central America/Caribbean/South America

- 5 February 2016 (Guyana - Late Report)** – Robbers boarded an anchored container ship near position 06:49 N – 058:10 W, Georgetown Port Anchorage. Alert duty crewman spotted the robbers near the paint locker and raised the alarm. The vessel’s Master notified the Coast Guard and a boat was dispatched to investigate. Upon seeing the alerted crewmembers and the approaching Coast Guard boat, the robbers escaped with stolen ship’s stores.
- 3 February 2016 (Peru – Late Report)** – Seven robbers in two speedboats came alongside an anchored product tanker near position 12:00 S – 077:12 W, Callao Port Anchorage. Two robbers boarded the vessel but were stopped by the alert crew resulting in the robbers escaping without stealing anything.



*Atlantic Ocean Area*

No current incidents to report

*Northern Europe/Baltic*

No current incidents to report

*Mediterranean/Black Sea*

- 11 February 2016** - According to NATO chief Jens Stoltenberg, NATO ships are being deployed to the Aegean sea in a bid to deter people-smugglers taking migrants from Turkey to Greece. The announcement follows a request from Turkey, Greece and Germany at a defense ministers’ meeting in Brussels. MR Stoltenberg has disclosed that the mission would not be about “stopping or pushing back refugee boats,” adding that instead, NATO will contribute “critical information and surveillance to help counter human trafficking.” He further disclosed that the decision was made in order to help Greece and Turkey “manage a human tragedy in a better way than we have managed to do so far.” Earlier, US Defense Secretary Ashton Carter commented that targeting the “criminal syndicate that is exploiting these poor people” would have the greatest humanitarian impact. NATO’s Standing Maritime Group 2, which is under German command, will lead the operation in co-operation with Greek and Turkish authorities. According to the United Nations refugee agency, almost 75,000 migrants and refugees have already arrived in Greece by sea in 2016.

*Spotlight Report: Libya*

Libya’s security situation remains critical; extreme caution is advised for commercial vessels operating in Libyan waters. Libya faces a significant rise in terrorism by Islamic State in Libya, which has now incorporated attacks via maritime trajectory. There is a significant threat to commercial vessels attempting to approach Libyan ports.

*Port Status as of 15 February 2016*

Port Name	Port Status	Risk Level	Risk Change (since September 2015)
Port of Abu Kammash	Open	Low	
Port of al-Khums (Homs)	Open	Low	
Port of As-Sidra (Sirte, Es Sider)	<b>Closed</b>	High	

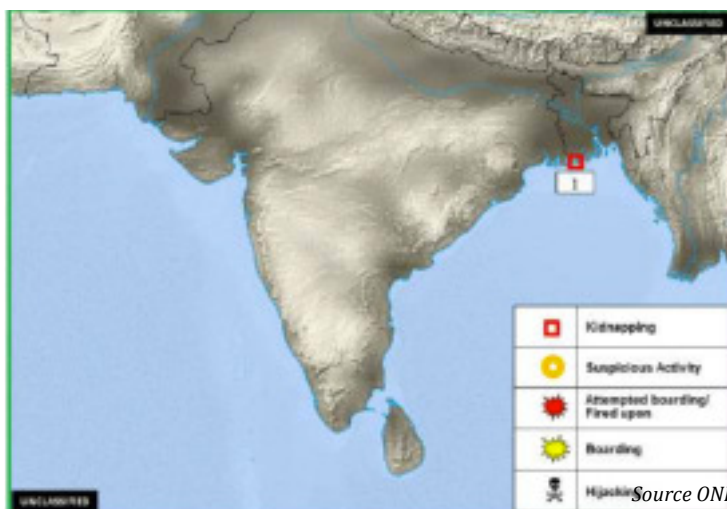
Port of Benghazi	Closed	High	
Port of Bouri (offshore port)	Open	No Known Risk	
Port of Derna	Closed	High	
Port El Brega (Marsa El Brega)	Open	High	Upgraded from Low. 1/16
Port of Hariga	Open	Medium	
Port of Mellitah	Open	Medium	
Port of Misrata (Qasr Ahmed)	Open	High	
Port of Ras Lanuf	Closed	High	
Port of Tobruk	Open	Medium	
Port of Tripoli	Open	High	
Port of Zawiya (Zawia)	Open	Medium	
Port of Zueitina	Closed	High	Upgraded from Medium. 1/16

### Arabian Gulf

No current incidents to report

### East Asia/Indian Subcontinent

- 14 January 2016 (Bangladesh – Late Report)** – Eleven fishermen were abducted while fishing near Hatiya Island. The kidnapers initially demanded a ransom for their return however police rescued the fishermen the following day.



*Northeast Asia*

No current incidents to report

*Pacific Ocean/Southern Ocean*

No current incidents to report



## About MS Risk

MS Risk is a privately owned company domiciled in the Isle of Man. It is underwritten by a syndicate of Lloyd's of London for special risks case management in all jurisdictions. It also acts as retained advisors to syndicates in the Lloyd's of London specialty risk insurance markets: kidnap for ransom, extortion, hijack, illegal detention, illegal war tax, malicious product tamper, terrorism, political and war risk.

MS Risk is always mindful and compliant to legislation and guidelines on the use of private security services including, but not limited to the US FCPA (1977), UK Bribery Act (2010), Canadian Bill C-48 (2007), ASX 8 Corporate Governance Principles, and the World Bank/IFC Voluntary Principles on the Use of Government and Private Security Forces. MS Risk is a signatory of the Swiss government's International Code of Conduct. It is transparent and compliant to market expectations on legal and ethical conduct in the performance of services.

MS Risk has a dedicated team of researchers, a 24/7 hotline service and a pool of trained and experienced consultants to support client needs.

MS Risk supports clients in a variety of business sectors with the following services:

- Security Consulting
  - Risk assessments and intelligence reporting
  - Planning and management
  - Due diligence and investigations.
- Project Management
  - Interim security
  - Training
  - Special assignments
- Crisis Response
  - Crisis management
  - Business continuity management
  - Hostile operations support to commercial interests
- Virtual Security Director service for clients lacking a full time security executive.

References are always available.

More information is found at [www.msrisk.com](http://www.msrisk.com)

### 24 hr Contact Information:

Email: [operations@msrisk.com](mailto:operations@msrisk.com)

Telephone: +44 207 754 3555



South Suite, Ragnall House, 18 Peel Road  
Douglas, Isle of Man, IM1 4LZ

24 hr Global Contact: +44 207 754 3555  
[www.msrisk.com](http://www.msrisk.com)

**Directors**

S.J. Bingham, P.A. Crompton, V.K. Prentice, P.O.J. Tracy  
Registered in the Isle of Man No. 007435V